

REPRESENTING THE LEADING BRANDS IN RETAIL.  
**EXPLORE WHAT RILA HAS TO OFFER.**



**RETAIL INDUSTRY  
LEADERS ASSOCIATION**

# WHO WE ARE



The Retail Industry Leaders Association (RILA) is the US trade association for retailers that have earned leadership status by virtue of their sales volume, innovation or aspiration. We convene decision-makers to collaborate and gain from each other's experience. We advance the industry through public-policy advocacy and education. And through research and thought leadership, we propel developments that foster both economic growth and sustainability. Our aim is bold but simple: to elevate a dynamic industry by transforming the environment in which retailers operate.

As the retail industry's advocate in Washington, RILA is a trusted source dedicated to telling the retail industry's story and informing lawmakers of the impact and consequences of the decisions they make. On the retail operations side, RILA provides a forum where members can conduct discussions aimed at understanding common operational practices, areas of concern and pragmatic solutions to problems. And our educational events are second to none.

RILA is structured to focus on core areas where retailers can network to make a difference.

- Asset Protection
- Finance
- Human Resources
- Legal & Compliance
- Public Policy & Advocacy
- Supply Chain
- Sustainability & Energy
- Technology & Innovation

## WHAT WE BELIEVE:

- Retail is vital.
- Retail is ever-evolving.
- The customer experience is as important as the transaction.
- Collaboration makes retailers better competitors.
- We are our members.

*The RILA Board, made up of a skilled and committed group of retail leaders, has worked tirelessly to do what is right for our employees, customers and the industry. I look forward to partnering with my peers to continue to shape the future of our industry."*



— Corie Berry, Chief Executive Officer, Best Buy Co., Inc.

# CHIEF EXECUTIVE OFFICERS

## RILA'S BOARD OF DIRECTORS

### **\*Corie Barry**

#### **Chair**

Chief Executive Officer, Best Buy Co., Inc.

### **\*Richard Keyes**

#### **Vice Chair**

President & CEO, Meijer, Inc.

### **Joel Anderson**

Chief Executive Officer

Petco

### **Shelley Bransten**

Corporate Vice President

WW Retail & Consumer Goods

Microsoft Corporation

### **Mark Breitbard**

President & CEO,

Global Gap Brand, Gap Inc.

### **Jon Carson**

Senior Vice President

Retail

BlueYonder Group, inc.

### **Brian Cornell**

Chairman & Chief Executive Officer

Target Corporation

### **Philip Daniel**

President & CEO, Customer Satisfaction

AutoZone

### **Ted Decker**

Chair, President & Chief Executive Officer

The Home Depot, Inc.

### **Ken Hicks**

Chief Executive Officer

PetSmart

### **Michelle Gass**

President & Chief Executive Officer

Levi Strauss & Co.

### **Mark LaVigne**

President and CEO

Energizer Holdings, Inc.

### **David Morales**

SVP Sales

FedEx

### **Erik Nordstrom**

CEO, Nordstrom, Inc.

### **Joe Preston**

President & CEO

New Balance Athletics

### **Javier Quinones**

CEO & Chief Sustainability Officer

IKEA US

### **Mike Shore**

SVP and General Manager, Enerprise

Axon

### **Stacey Shulman**

VP Network & Edge Computing Group GM,

Health Education, & Consumer Industries,

Intel Corporation

### **Steve Smith**

President & CEO,

L.L. Bean

### **Jill Standish**

Senior Managing Director,

Global Retail Consulting Practice,

Accenture

### **J.K. Symancyk**

President & Chief Executive Officer

Signet Jewelers

### **Todd Vasos**

Chief Executive Officer

Dollar General Corporation

### **Pamela Stewart**

Chief Customer Officer –

Retail North America Operating Unit

The Coca-Cola Company

### **Don Unser**

President, Thought Leadership Gen

Merchandise/Retail

Circana

### **Brian Dodge**

President & CEO, RILA

### **Timothy Baer**

Counsel to the Board,

Partner

TRB Partners, LLC

*\*Executive Committee Member*

## THE RETAIL RILA CEO FORUM

The Retail CEO Forum (formerly known as the Leadership Forum) is the once-yearly, invitation-only conference event for the leading CEOs in the retail industry.

Limited to 100 hand-selected retail industry executives, this elite gathering offers two full days of meeting, networking and exchanging ideas. The most powerful U.S. retail and product manufacturer CEOs, along with a few select members of their C-suite teams, attend, to share business insights, assess trends and tackle the critical issues facing the retail industry today and in the future.

## CEO COUNCIL

Chief Executive Officers network with peers and discuss issues of common interest, help to drive the strategic initiatives for RILA, and benchmark on key issue areas for leaders of America's largest retailers. This group meets regularly via conference call and in person at RILA's annual Retail CEO Forum.

# GOVERNMENT AFFAIRS

## COUNCILS, COMMITTEES, AND WORKING GROUPS

### PUBLIC POLICY STEERING COMMITTEE

Senior-most government affairs executives for Premier Retail Member companies, following the direction of the Board, help set the strategy of RILA's public policy work.

### GOVERNMENT AFFAIRS COMMITTEE

Senior government relations executives from retail member companies shape RILA's public policy agenda and advocacy efforts at the federal level.

### STATE AFFAIRS COMMITTEE

State government relations executives share information about trends in state and local governments affecting retail and strategize on RILA's public policy response.

### COMMUNICATIONS COMMITTEE

Senior-most retail communicators can network with peers and discuss issues of common interest, including leading communications practices and issues with implications across the retail industry, such as cybersecurity and disaster response.

### RETAIL BENEFITS COUNCIL

The Retail Benefits Council, formerly known as the Health Care Committee, is comprised of senior health and benefits executives, as well as government affairs professionals, focused on operational issues, policy development, and federal regulatory and legislative activities. The group strategizes on employee offerings and how those fit into the 21st century retail workforce.

### LABOR & EMPLOYMENT COMMITTEE

Labor and human resources executives focus on employment and labor issues affecting the retail industry, such as wage/hour developments, discrimination, labor management matters and unionization issues. Areas of discussion include federal legislative and regulatory action around issues such as the Department of Labor's overtime regulations, EEOC activity, and the National Labor Relations Board's ruling on representation case procedures, in addition to the Specialty Healthcare and Browning-Ferris Industries case decisions.

### INTERNATIONAL TRADE & CUSTOMS COMMITTEE

Vice presidents, directors, managers and analysts of trade, customs and import compliance focus on trade, both import and export issues, as well as global retailing issues.

### TAX ADVISORY COUNCIL

The Tax Advisory Council is comprised of the senior most tax executives of RILA's retail member companies. This committee serves as the strategic counsel for public policy tax issues and provides input to the Public Policy Steering Committee (PPSC) on priorities and objectives for tax-related public policy.

### TAX COMMITTEE

Retail tax executives focus on federal legislative and regulatory tax issues impacting the retail industry. In order to provide input, feedback, and leadership on the tax issues of the day, the RILA Tax Committee works with the Internal Revenue Service, the Treasury Department and the tax committees of Congress on a routine basis.

### PAYMENTS COMMITTEE

Finance, payments, legal and government relations executives provide insight and guidance on issues such as interchange fees, virtual currency, EMV migration, access to credit and gift cards.

## RESOURCES

### RILA Report: Government

This weekly e-newsletter, distributed to RILA member companies, provides current information on legislative issues important to the retail community.



**LEARN MORE. GET INVOLVED.**  
[RILA.ORG/FOCUS-AREAS/  
PUBLIC-POLICY](https://RILA.ORG/FOCUS-AREAS/PUBLIC-POLICY)

# LEGAL & COMPLIANCE

## COUNCILS, COMMITTEES, AND WORKING GROUPS

### CHIEF LEGAL OFFICERS COMMITTEE

The RILA Chief Legal Officer Committee addresses the broad array of legal, operational and policy challenges that retail companies face and provides advice and direction to RILA on strategies to assist retailers in meeting these challenges. The Chief Legal Officer or the General Counsel of each RILA retail member is invited to join the committee. The Chief Legal Officer Committee meets in-person twice each year and conducts conference calls as needed.

### COMPLIANCE COUNCIL

Chief compliance officers address issues that affect the retail environment and its vast scope of transactions, customers, employees, locations, and modes of media as well as the legal environment of compliance with a wide variety of federal and state laws covering many legal areas.

### LEGAL DIRECT REPORTS (L2) COMMITTEE

The senior-most attorneys, reporting directly to the General Counsel, work collaboratively to exchange information including leading practices, challenges and trends to enhance legal department effectiveness. The committee communicates through meetings, conference calls, benchmarking surveys and educational webinars and presentations.

### CONSUMER PRODUCTS COMMITTEE

A forum for quality assurance, product stewardship, sourcing, legal, and government affairs professionals to share information specific to retailers' product safety compliance challenges, including proposed legislation and regulations and new compliance trends.

### ENVIRONMENT & WASTE COMPLIANCE NETWORK

RILA member forum for education and peer benchmarking focused on environmental compliance issues that are of relevance for the majority of RILA members with an emphasis on waste issues, including more emerging waste compliance issues like packaging extended producer responsibility and recycling mandates.

## RESOURCES

### RILA Retail Law Conference

RILA's annual Retail Law Conference is designed specifically for in-house legal counsel from all retail channels. The conference provides retail executives the opportunity to connect with peers and hear from expert speakers from leading retail companies, government, and select law firms on the most pressing issues facing retail lawyers.



### Retail Litigation Center

The Retail Litigation Center (RLC) is a 501(c)(6) membership association and membership is open to all retailers, as well as to related legal service providers. Retail members help us give voice to the retail industry in legal proceedings.



### Retail Compliance Center

The Retail Compliance Center (RCC) provides retail-specific resources, tools, and learning opportunities for retailers facing various federal, state, and local regulations and compliance responsibilities.



**LEARN MORE. GET INVOLVED.**

[RILA.ORG/FOCUS-AREAS/LEGAL-AFFAIRS-COMPLIANCE](https://rila.org/focus-areas/legal-affairs-compliance)



# SUPPLY CHAIN

## COUNCILS, COMMITTEES, AND WORKING GROUPS

### SUPPLY CHAIN LEADERS COUNCIL

Senior-most supply chain executives of retail member companies gather to network, explore, and critique the business implications of a wide spectrum of supply chain issues and to provide RILA's strategic direction in this area.

### TRANSPORTATION & LOGISTICS COMMITTEE

Vice presidents and directors address operational and policy issues within transportation and infrastructure areas that impact transportation systems and logistics operations.

### INTERNATIONAL TRADE & CUSTOMS COMMITTEE

Vice presidents, directors, managers, and analysts of trade, customs, and import compliance from retail member companies focus on trade issues, including both import and export concerns, as well as global retailing issues.

## RESOURCES

### LINK RILA's Retail Supply Chain Conference

The premier event for retail supply chain executives. The only conference that gives you the know-how and expertise to improve your retail supply chain. Offering the best in-class educational program addressing the topics that matter most to retailers.



### DISTRIBUTION COMMITTEE

Vice presidents and directors address operational and policy issues within the distribution space that impact distribution networks/distribution center operations.

### SUPPLY CHAIN ADVISORY BOARD

The top logistics/supply chain executives oversee the structure and programming of the annual Retail Supply Chain Conference.



LEARN MORE. GET INVOLVED.

[RILA.ORG/FOCUS-AREAS/SUPPLY-CHAIN](http://RILA.ORG/FOCUS-AREAS/SUPPLY-CHAIN)

# HUMAN RESOURCES

## COUNCILS, COMMITTEES, AND WORKING GROUPS



### RETAIL TALENT COMMITTEE

The Retail Talent Committee (RTC), consisting of groups formerly known as Retail Talent Council and Retail Benefits Council respectively, is comprised of talent executives focused on areas from acquisition, retention, development, and benefits. The Committee explores a range of benchmarking topics as well as discusses policy solutions and actions policymakers can pursue to help retailers develop the 21st century retail workforce that is diverse innovative and skilled.

### TALENT LEADERSHIP COUNCIL

The Talent Leadership Council (TLC), formerly known by the names Retail Talent Council and the Human Resources Leaders Council, is comprised of the top human resources executives at leading retailers who oversee all things related to retail employment and have the responsibility to develop strategic visions for their workforce. The TLC focuses on long term trends and vision of the retail workforce and provides thought leadership, research and strategic guidance to help retailers craft the 21st century retail workforce that is diverse, innovative and skilled.

### LABOR & EMPLOYMENT COMMITTEE

Labor and human resources executives focus on employment and labor issues affecting the retail industry, such as wage/hour developments, discrimination, labor management matters and unionization issues. Areas of discussion include federal legislative and regulatory action around issues such as the Department of Labor's overtime regulations, EEOC activity, and the National Labor Relations Board's ruling on representation case procedures, in addition to the Specialty Healthcare and Browning-Ferris Industries case decisions.

### RETAIL CULTURE & COMMUNITY COMMITTEE

The Retail Culture & Community Committee (R3C) is comprised of executives at leading retailers who work on aligning corporate strategies with a welcoming and collaborative company culture to achieve the company's goals and vision.

R3C is a practitioner-led community that provides support to member retailers with key strategy-culture alignment areas such as integrating a values-aligned talent management and engagement strategy, supporting respectful employee-customer interactions, informing philanthropic opportunities, and community partnerships, and staying apprised of the political, media, and legal context. Participating practitioners benchmark with their peers about challenges unique to well-known retail and brand organizations, such as the ongoing brand and reputation considerations associated with millions of daily employee-consumer interactions.



LEARN MORE. GET INVOLVED.  
[RILA.ORG/FOCUS-AREAS/  
HUMAN-RESOURCES](https://RILA.ORG/FOCUS-AREAS/HUMAN-RESOURCES)



# FINANCE

## COUNCILS, COMMITTEES, AND WORKING GROUPS



### CHIEF FINANCIAL OFFICERS COUNCIL

Chief Financial Officers network with their peers to discuss key financial issues impacting the retail industry and benchmark with their peers. The group meets regularly via conference call.

### FINANCE LEADERS COUNCIL

Chief accounting officers, treasurers and/or controllers discuss positions on issues relating to financial reporting, procedures and audits based on data gathered through benchmarking and best practices. The council communicates to both government and non-government agencies and rule-makers to develop and advance a better and more accurate understanding of retail industry financial practices.

### TAX ADVISORY COUNCIL

The Tax Advisory Council is comprised of the senior most tax executives of RILA's retail member companies. This committee serves as the strategic counsel for public policy tax issues and provides input to the Public Policy Steering Committee (PPSC) on priorities and objectives for tax-related public policy.

### INVESTOR RELATIONS COMMITTEE

Retail investor relations executives meet to benchmark and discuss issues impacting IR such as forecast accuracy, investor targeting and engagement strategies, proxy contests, and consideration of public statements on complex topics.

### INTERNAL AUDIT COMMITTEE

Chief Audit Executives or the senior-most audit executives from member companies discuss emerging audit issues and internal controls, as well as block-and-tackle techniques for audit planning, working papers, risk assessments, and report writing. The committee also benchmarks leading practices on a variety of topics, ranging from department structure and staffing to handling more technical issues such as cybersecurity, PCI compliance, data analytics and more.

### TAX COMMITTEE

Retail tax executives focus on federal legislative and regulatory tax issues impacting the retail industry. In order to provide input, feedback, and leadership on the tax issues of the day, the RILA Tax Committee works with the Internal Revenue Service, the Treasury Department and the tax committees of Congress on a routine basis.

### PAYMENTS COMMITTEE

Financial, payments, legal, and government relations executives provide insight and guidance on issues such as interchange fees, virtual currency, EMV migration, access to credit and gift cards.



**LEARN MORE. GET INVOLVED.**  
[RILA.ORG/FOCUS-AREAS/FINANCE](https://RILA.ORG/FOCUS-AREAS/FINANCE)



# ASSET PROTECTION

## COUNCILS, COMMITTEES, AND WORKING GROUPS

### ASSET PROTECTION LEADERS COUNCIL

Retail asset protection pyramid heads address key industry priorities and challenges to advance retail asset protection and enhance operational effectiveness within their respective companies.

### WORKPLACE SAFETY COMMITTEE

Retail safety professionals identify smart practices for minimizing customer and employee injuries, support regulatory compliance, work to maintain strong partnerships with enforcement agencies, and assist in legislative efforts.

### CRIMES AGAINST BUSINESS COMMITTEE

Corporate and field investigation managers identify emerging criminal trends, share prevention and response strategies, and develop smart practices to mitigate risks.

### ASSET PROTECTION ADVISORY BOARD

Industry leaders across retail segments work collaboratively to develop the educational content and plan for RILA's annual Retail Asset Protection Conference.

### CHIEF STORE/OPERATING OFFICERS COUNCIL

Top-level executives who oversee store operations.

### RILA Communities Foundation

The RILA Communities Foundation, a 501(c)3, is tasked with addressing complex challenges impacting the communities served by leading retailers. The Foundation is focused on bringing together diverse stakeholders to enhance collaboration and efficiencies to ultimately restore vibrance and economic growth in communities across America.



## RESOURCES

### RILA Asset Protection Conference

The Retail Asset Protection Conference offers the best in-class educational program addressing the topics that matter most to retailers. As the premier event for retail asset protection executives, this is the only industry event for those that hope to gain powerful insights, extensive networking and in-depth content.



**LEARN MORE. GET INVOLVED.**  
[RILA.ORG/FOCUS-AREAS/  
ASSET-PROTECTION](https://RILA.ORG/FOCUS-AREAS/ASSET-PROTECTION)

# SUSTAINABILITY

## COUNCILS, COMMITTEES, AND WORKING GROUPS

### SUSTAINABILITY COMMITTEE

Sustainability and CSR executives convene to advance more environmentally sustainable and circular business opportunities, including greenhouse gas emissions reduction, the efficient and responsible use of natural resources, and product- and material-lifecycle value retention. The committee meets twice per year in person and bi-monthly via conference call.

### RESPONSIBLE SOURCING COMMITTEE

Retail executives working on responsible and ethical sourcing and social compliance convene to advance the performance of their supply chains, with a specific focus on relationships with suppliers to ensure compliance and drive continuous improvement in existing and emerging sourcing regions. The committee meets twice per year in person and bi-monthly via conference call.

### ESG EXECUTIVE COMMITTEE

Executives guiding ESG strategy convene to share leading practices, drive progress in ESG issue areas, and identify opportunities to share the retail perspective with key stakeholders.

### ESG COMMUNITY

Community for RILA members across different functional areas who are interested in Environmental, Social & Governance (ESG) topics. The Community is part of the RILA Retail ESG Initiative, whose mission is to connect and leverage RILA's diversity of ESG-touching communities to allow the retail industry to collectively learn about, discuss and influence the evolving retail ESG reporting landscape. Currently the community meets virtually quarterly.



**LEARN MORE. GET INVOLVED.**

[RILA.ORG/FOCUS-AREAS/  
SUSTAINABILITY-ENVIRONMENT](https://rila.org/focus-areas/sustainability-environment)

# TECHNOLOGY & INNOVATION

## COUNCILS, COMMITTEES, AND WORKING GROUPS



### PRIVACY LEADERS COUNCIL

Chief privacy officers and general counsel executives address privacy issues affecting the retail industry, such as UAS and facial recognition technologies, trans-Atlantic data flows and data breach legislation. In addition to policymaking, RILA's focus is in facilitating discussions of best practices among peers utilizing meetings, surveys, and where appropriate creating consensus documents for both internal and external use.

### CHIEF INFORMATION OFFICER LEADERS COUNCIL

The RILA CIO Council is the premier community for leading retail CIOs. This is a community for executives who lead the technology vertical at the largest retailers. This community is for private conversations with true peers leveraging RILA's expertise alongside C-Suite communities.

### ARTIFICIAL INTELLIGENCE WORKING GROUP

Artificial Intelligence (AI) working group comprised of leaders from APLC, CLO, COMPCL, DRC, GAC, IAUDIT, LEC, L2s, PLC, RTC, SCLC, and TAX, dedicated to understanding the potential regulatory and legislative implications of AI, including generative AI technology (e.g., ChatGPT), on the retail industry.





# RETAIL INDUSTRY LEADERS ASSOCIATION

## RILA STAFF



Brian Dodge  
President



Jason Brewer  
Senior EVP,  
Communications &  
Marketing



Austen Jensen  
Senior EVP,  
Public Affairs



Lisa LaBruno  
Senior EVP & Executive  
Director, RILA  
Communities Foundation



Breana Murphy  
Senior EVP,  
Partnerships & Events



Monica Welt  
President, RLC  
Senior EVP &  
General Counsel



Nicholas Ahrens  
Senior VP, Strategy,  
Innovation & Content



Evan Armstrong  
Senior Vice President,  
Government Affairs



Erin Hiatt  
Senior Vice President  
Retail Operations



Tripp Taylor  
Senior VP, Business  
Development



Courtney Titus Brooks  
Vice President, Tax



Sung Chang  
Vice President,  
International Trade



John Chen  
VP, Marketing and  
Management Information  
Systems



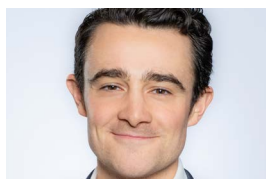
Jess Dankert  
Vice President,  
Supply Chain



Kelly Foelber  
Vice President,  
Membership &  
Executive Affairs



Ginger Gibson  
Vice President,  
Media Relations



Justin Goldberger  
Vice President,  
Technology Policy



Khris Hamlin  
Vice President,  
Asset Protection



Michael Jordan  
Vice President,  
Conferences & Events



Susan Kirsch  
VP, Regulatory Affairs  
& Assistant General  
Counsel



Talana Lattimer  
Vice President  
Creative Services



Josh Moore  
Vice President,  
Litigation, RLC



Melissa Murdock  
VP, Communications  
and Media Relations



Allison Rosser  
Vice President, Retail  
Crime Strategies  
RCF



Paul Sciubba  
VP, Legal Affairs, RILA  
- Special Counsel, RILA  
Communities Foundation



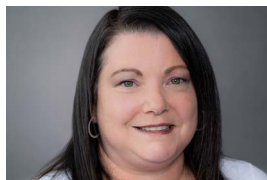


# RETAIL INDUSTRY LEADERS ASSOCIATION

## RILA STAFF



Steph Standish  
Vice President,  
Administration



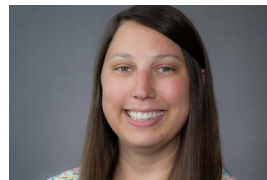
Maria Fiore  
Senior Director,  
Content & Experience



Sarah Gilmore  
Senior Director,  
Government Affairs



Austin Gold  
Senior Director,  
Government Affairs



Caroline Niery  
Senior Director,  
Communications &  
Marketing



Allie Sauers  
Senior Director,  
Legal & Regulatory  
Affairs



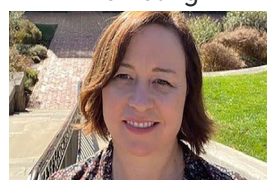
Somer Flanagan  
Director, Exhibitor &  
Sponsor Relations



Ellen Jackson  
Director,  
Government Affairs



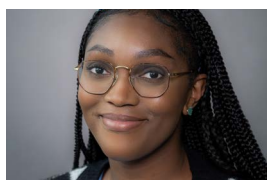
Jackie Niederman  
Director, Marketing



Amanda Shapiro  
Director,  
Customer Success &  
Hosted Retailer



Anna Williamson  
Director,  
Legal Affairs &  
Paralegal



Moni Adeyi  
Senior Manager, CSR



Kallie Brown  
Senior Manager, PAC  
& Government Affairs



Luisa Lobo  
Senior Manager, Legal  
& Regulatory Affairs



Vanesa Powers  
Senior Manager  
Environment Programs



Kate Rabatsky  
Senior Manager,  
Conferences & Events



Dinora Rodriguez  
Senior Staff  
Accountant



Chase Shields  
Senior Manager,  
Creative Services



Adora Belcher  
Manager,  
Supply Chain & Retail  
Operations



Emily Benack  
Manager,  
Government Affairs



LEARN MORE. GET INVOLVED.  
[RILA.ORG/ABOUT-RILA/STAFF](http://RILA.ORG/ABOUT-RILA/STAFF)



# RETAIL INDUSTRY LEADERS ASSOCIATION

## RILA STAFF



Annalise Catherine  
Manager, Retail Crime  
Initiatives  
RCF



Malcolm Cutlar  
Manager,  
Communications



Kimberly Russell  
Legal Manager,  
Member Relations &  
Meetings



Madi Waitt  
Manager,  
Partnership  
Communications



Quay Montgomery  
Coordinator,  
Creative Services



Holden Schachte  
Coordinator,  
Business Development



Olivia Sheen  
Coordinator, Retail  
Operations  
Committees



Kati Tanner  
Coordinator,  
Government Affairs

# OUR RETAIL MEMBERS

## LEADING COMPANIES IN EACH RETAIL VERTICAL

- 7-Eleven, Inc.
- Abercrombie & Fitch Co.
- Academy Sports + Outdoors
- Ace Hardware Corp.
- Advance Auto Parts, Inc.
- Ahold Delhaize USA
- Albertsons Companies
- Aldi Inc.
- American Eagle Outfitters, Inc.
- Apple Inc.
- At Home Group Inc.
- AutoZone, Inc.
- Bass Pro Shops, Inc.
- Bath & Body Works, Inc.
- Best Buy Co., Inc.
- Blain's Farm & Fleet
- Boot Barn
- Burlington Stores, Inc.
- Canadian Tire Corporation, Limited
- CarMax, Inc.
- Carter's, Inc.
- Casey's General Stores, Inc.
- Chanel
- Chewy, Inc.
- Chico's FAS, Inc.
- Columbia Sportswear Company
- Costco Wholesale Corporation
- Cracker Barrel Old Country Store, Inc.
- Crate & Barrel Holdings, Inc.
- CVS Health
- Designer Brands
- DICK'S Sporting Goods, Inc.
- Dillard's, Inc.
- Discount Tire
- Dollar General Corporation
- Dollar Tree, Inc.
- Express, LLC
- Fanatics
- Five Below, Inc.
- FleetPride
- Floor & Decor
- Foot Locker, Inc.
- Gap Inc.
- Giant Eagle, Inc.
- Guitar Center
- H&M
- Hennes & Mauritz
- Hanesbrands Inc.
- Harbor Freight Tools
- H-E-B
- Hibbett Retail, Inc.
- Hy-Vee, Inc.
- IKEA US
- Inditex USA
- J.Crew Group, Inc.
- JD Sports
- Knitwell Group
- Kohl's Corporation
- Kontoor
- L.L.Bean, Inc.
- Lands' End, Inc.
- La-Z-Boy
- Levi Strauss & Co.
- Lowe's Companies, Inc.
- Lululemon Athletica, Inc.
- Macy's Inc.
- Meijer, Inc.
- Melissa & Doug
- Navy Exchange Service
- Command (NEXCOM)
- New Balance Athletics Inc.
- NIKE, Inc.
- Nordstrom, Inc.
- Office Depot, Inc.
- Ollie's Bargain Outlet
- O'Reilly Auto Parts, Inc.
- Pandora Jewelry LLC
- Penney OpCo LLC
- Petco Health and Wellness Company Inc.
- PetSmart LLC
- Primark US
- Publix Super Markets, Inc.
- PUMA North America
- Qurate Retail Group
- Rack Room Shoes, Inc.
- Recreational Equipment, Inc. (REI)
- Ross Stores Inc.
- Sally Beauty Holdings, Inc.
- Sephora USA, LLC
- Signet Jewelers
- Southeastern Grocers
- Staples US Retail
- Starbucks Coffee Company
- Tailored Brands, Inc.
- Target Corporation
- The Home Depot, Inc.
- The Kroger Co.
- The Lovesac Company
- The Michaels Companies, Inc.
- The Sherwin-Williams Company
- The TJX Companies, Inc.



LEARN MORE. GET INVOLVED.  
[RILA.ORG/ABOUT](https://rila.org/about)

# OUR MEMBERS

## LEADING COMPANIES IN EACH RETAIL VERTICAL

- Tractor Supply Company
- Ulta Beauty, Inc.
- Under Armour, Inc
- VF Corporation
- Variety Wholesalers, Inc.
- Victoria's Secret & Co.
- Walgreen Co.
- Walmart Inc.
- Wawa, Inc.
- Wayfair LLC
- Wegmans Food Markets, Inc.
- Williams-Sonoma, Inc.



LEARN MORE. GET INVOLVED.  
[RILA.ORG/ABOUT-RILA/STAFF](https://RILA.ORG/ABOUT-RILA/STAFF)



# REPRESENTING THE LEADING BRANDS IN RETAIL

## PREMIER MEMBERS



Abercrombie & Fitch Co.



# WHO WE ARE

RILA is the trade association for the world's most innovative retail brands. We work to re-imagine and transform the retail ecosystem — and equip leading retailers to succeed in it.

TO LEARN MORE, VISIT [RILA.ORG](https://rila.org)

# RILA

RETAIL INDUSTRY LEADERS ASSOCIATION  
99 M STREET, SE • SUITE 700 • WASHINGTON, DC 20003

[WWW.RILA.ORG](http://WWW.RILA.ORG)