

# LOGISTICS CONFERENCE 2011

FEBRUARY 20-23  
GAYLORD PALMS RESORT & CONVENTION CENTER  
ORLANDO, FLORIDA

Title Sponsor



## Retailer Prospectus

# LOGISTICS CONFERENCE 2011



February 20-23 • Gaylord Palms Resort & Convention Center • Orlando, FL

## Conference Schedule\*

### Sunday, February 20

7:00 a.m.-3:00 p.m.	Golf Tournament
3:30-5:00 p.m.	Women in Logistics Networking Event
5:30-6:00 p.m.	Student Welcome Reception
6:00-7:00 p.m.	Welcome Reception

### Monday, February 21

8:00-9:00 a.m.	Welcome & Opening Keynote Address
9:15-10:15 a.m.	General Session
10:30-11:30 a.m.	Breakout Sessions
11:30 a.m.-1:15 p.m.	Luncheon Session
1:30-2:30 p.m.	Breakout Sessions
2:45-3:45 p.m.	General Session
4:00-5:00 p.m.	General Session
5:00-7:00 p.m.	Cocktails & Buffet in the Exhibit Hall

### Tuesday, February 22

8:00-9:00 a.m.	General Session
9:15-10:15 a.m.	Breakout Sessions
10:30-11:30 a.m.	General Session
11:30 a.m.-1:15 p.m.	Lunch in the Exhibit Hall
1:30-2:30 p.m.	General Session
2:45-3:45 p.m.	Breakout Sessions
4:00-5:00 p.m.	General Session
5:00-6:30 p.m.	Cocktails & Buffet in the Exhibit Hall

### Wednesday, February 23

8:00-9:00 a.m.	General Session
9:15-10:15 a.m.	General Session
10:30-11:30 a.m.	General Session

\*All times are tentative and subject to change.

## If you go to just one event in 2011, make it RILA's Logistics Conference. Why?

Because RILA's Logistics 2011 is the best single gathering of top supply chain executives from retail and consumer products companies.

Its educational sessions are focused on the pressing issues.

Its attendees are from the largest and most innovative retail companies.

Its size makes it the best networking forum in the business.

And its format ensures you'll get maximum ROI for your investment.

Logistics 2011 is not all things to all people. It is a focused gathering for senior-level supply chain executives from top retail and consumer products companies. Attendees should be EVPs, SVPs, VPs and Directors of the following disciplines:

- Supply Chain (including Planning, Strategy & Operations)
- Logistics
- Transportation
- Distribution
- Warehouse/Distribution Center Operations
- Imports, Exports & Compliance
- Freight, Consolidation & Shipping
- Inventory Management & Replenishment
- Supply Chain Security

Check [www.rila.org/logistics](http://www.rila.org/logistics) for program and speaker updates.

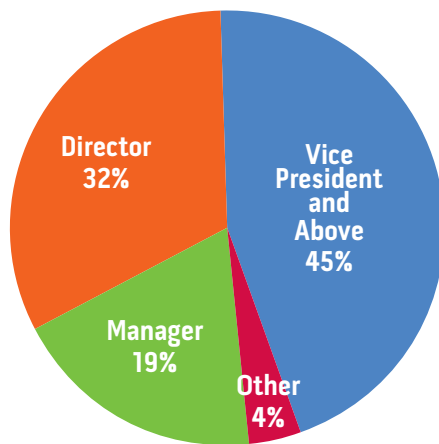
# LOGISTICS CONFERENCE 2011



## 2010 Attendees

RILA's Logistics Conference is the largest single gathering of supply chain decision makers from retail and consumer product companies.

### Retailers and Product Suppliers Executive Levels



*77% of 2010 attendees were executives at Director level or above - 81% in 2009.*

## More Networking Opportunities

### Women in Logistics Session

RILA is the home of the only industry networking group for women supply chain professionals, and holds a networking session before the Logistics Conference. This rapidly growing group tripled in size from 2008 to 2010, and is on track to be a popular attraction again. Sign up early to ensure your participation in this great networking event.

**Sunday, February 20, 3:30-5:00 p.m.**

### RILA Logistics Golf Tournament

Our golf tournament is another great opportunity to network with industry leaders. This perennial sell-out event will be held at the Celebration Golf Club. Sign up early to participate.

**Sunday, February 20, 7:00 a.m.-3:00 p.m.**

# LOGISTICS CONFERENCE 2011



## What our retailers have to say:

*“The RILA Conference gives me an opportunity to meet and interact with the top leaders in supply chain and make real connections to help me serve our customers and employees. The quality of discourse and quality of the relationships I’ve made over the years at RILA make it a singular event on my calendar each year.”*

*~ Steve Szilagyi, Senior Vice President, Distribution, Lowe’s Companies, Inc.*

## The “who’s who” of retail attends RILA’s Logistics Conference:

- 7-Eleven, Inc.
- A.C. Moore Arts & Crafts, Inc.
- Abercrombie & Fitch, Co.
- Academy Sports + Outdoors
- Ace Hardware Corp.
- Aeropostale, Inc.
- American Eagle Outfitters, Inc.
- American Signature Furniture
- Amscan Inc.
- Amway Corporation
- Ann Taylor Stores Corporation
- Anna’s Linens
- Army and Air Force Exchange Service
- Audiovox Electronics Corporation
- AutoZone, Inc.
- Avon Products, Inc.
- Bass Pro Shops, Inc.
- BCBG Max Azria Group, Inc.
- Beall’s Inc.
- Bed Bath & Beyond Inc.
- Belk, Inc.
- Best Buy Co., Inc.
- Big Lots Stores, Inc.
- BISSELL Homecare, Inc.
- BJ’s Wholesale Club Inc.
- Blockbuster, Inc.
- The Body Shop, Inc.
- Bon-Ton Stores Inc.
- Brookshire Brothers
- Brown Shoe Company, Inc.
- The Buckle, Inc.
- Burlington Coat Factory Warehouse Corporation
- Cabela’s, Inc.
- Callaway Golf Company
- Canadian Tire Corporation, Limited
- Century 21 Department Stores
- Chico’s FAS, Inc.
- The Children’s Pla
- Christmas Tree Shops
- Christopher & Banks Corporation
- Circuit City Stores, Inc.
- Claire’s Stores, Inc.
- The Clorox Company
- Coach
- Coats & Clark Inc.
- Coca-Cola FEMSA
- Collective Brands
- The Container Store
- Cornerstone Brands, Inc.
- Costco Wholesale Corporation
- CVS Caremark Corporation
- DeLonghi America, Inc.
- Dick’s Sporting Goods, Inc.
- Dillard’s, Inc.
- Disney Parks Supply Chain Management
- Dollar General Corporation
- Dollar Tree Stores, Inc.
- Dots LLC
- DSW Inc.
- Duckwall-ALCO Stores, Inc.
- Easton-Bell Sports, Inc.
- Energizer Holdings, Inc.
- Esprit
- Family Dollar Stores, Inc.
- First Quality Enterprises, Inc.
- Foot Locker, Inc.
- Fossil, Inc.
- Fruit of the Loom
- GameStop Corp.
- Gander Mountain Stores
- Gap Inc.
- General Mills, Inc.
- Giant Eagle, Inc.
- Giant Tiger Stores Limited
- Gifts & More
- Gilt Groupe Inc.
- Gottschalk’s Inc.
- Great Lighting
- Guitar Center
- H.J. Heinz Co.
- Haggar Corp.
- Hallmark Cards, Inc.
- Hamilton Beach/Proctor-Silex, Inc.
- Hanesbrands Inc.
- Hannaford Bros. Co
- Hastings Entertainment, Inc.
- Haverty Furniture Companies, Inc.
- H-E-B
- Heights Antiques on Yale, LLC
- Helen of Troy, L.P.
- Henkel Corporation
- Hobby Lobby Stores, Inc.
- The Home Depot, Inc.
- Home Hardware Stores Limited
- Honey Baked Ham
- Hot Topic Inc.
- Hub Group, Inc.
- Hudson’s Bay Company
- Inter IKEA Systems B.V.
- Interstate Battery System of America, Inc.
- J. Crew Group, Inc.
- J.C. Penney Company, Inc.
- Jones Apparel Group
- Keter Plastic LTD
- Kingfisher PLC
- Kirkland’s, Inc.
- The Kroger Company
- Kohl’s Corporation
- Kraft Foods Inc.
- L.L. Bean, Inc.
- Lasko Products, Inc.
- Levi Strauss & Co.
- Limited Brands, Inc.
- Lion Brand Yarn Company
- Liz Claiborne, Inc.
- Loblaw Companies Limited
- Loehmann’s Holdings, Inc.
- Lowe’s Companies, Inc.
- Lululemon Athletica, Inc.
- Luxe Beauty
- Macy’s Inc.
- Malt-O-Meal Company
- Marmaxx Group
- Mars Retail Group
- Mattel, Inc.
- Meijer, Inc.
- Mervyns, LLC
- Michaels Stores, Inc.
- Modell’s Sporting Goods, Inc.
- The Neiman Marcus Group, Inc.
- Nestlé Purina PetCare
- Nestle U.S.A.
- NIKE, Inc.
- Nintendo of America, Inc.
- Nordstrom, Inc.
- The North West Company
- Northern Tool & Equipment Co.
- Office Depot, Inc.
- Out! International, Inc.
- Overstock.com, Inc.
- Pacific Sunwear of California, Inc.
- Pamida Stores Operating Company, LLC
- Party City Corp.
- PEPBOYS AUTO
- The Pep Boys - Manny, Moe & Jack
- PETCO Animal Supplies, Inc.
- PetSmart, Inc.
- Phillips Van Heusen
- Pier 1 Imports Inc.
- Polo Ralph Lauren, LP
- PriceSmart, Inc.
- Procter & Gamble Co.
- PSS World Medical
- QVC, Inc.
- Radio Systems Corporation
- RadioShack Corporation
- Ralphs Grocery Company
- Redcats USA
- Reitmans (Canada) Ltd
- Remington Arms Company, Inc.
- Restoration Hardware
- Retail Products Group
- Retail Ventures Inc.
- Rooms To Go, Inc.
- Ross Stores Inc.
- S. C. Johnson & Son, Inc.
- Safeway Inc.
- Sally Beauty Holdings, Inc.
- Save-A-Lot, Ltd.
- Seabra Supermarkets
- Sears Holdings Corporation
- Shoebuy.com
- ShopKo Stores, Inc.
- Smart & Final Inc.
- Sony Electronics Inc.
- Southern Wine & Spirits
- Spencer Gifts, LLC
- The Sports Authority, Inc.
- Stage Stores, Inc.
- Starbucks Corporation
- Target Corporation
- Technicolor Home Entertainment Services, Inc.
- The TJX Companies, Inc.
- Thomson
- Toys R Us, Inc.
- Tractor Supply Company
- True Value Company
- Tween Brands Inc.
- Under Armour, Inc
- Unilever
- Urban Outfitters Inc.
- The Vitamin Shoppe
- W.S. Badcock Corporation
- Walgreen Co.
- Wal-Mart Stores, Inc.
- The Walt Disney Company
- Walt Disney Parks & Resorts
- Wegmans Food Markets, Inc.
- Wilkinson Hardware Stores Ltd.
- Williamson-Dickie Mfg. Co.
- Williams-Sonoma, Inc.
- Winn-Dixie Stores, Inc.
- Zale Corporation

# LOGISTICS CONFERENCE 2011



## Who We Are

The Retail Industry Leaders Association (RILA) is the trade association of the world's largest and most innovative retail companies. Retail executives choose RILA's unique collaborative forums, effective public policy advocacy, and premier educational events to advance excellence throughout the retail industry.

RILA members include more than 200 retailers, product manufacturers and service suppliers, which together account for more than \$1.5 trillion in annual sales, provide millions of jobs and operate more than 100,000 stores, manufacturing facilities, and distribution centers domestically and abroad.



1700 North Moore Street • Suite 2250  
Arlington, VA 22209  
(703) 841-2300 • (703) 841-1184 (fax)  
www.rila.org

## CONFERENCE STEERING COMMITTEE

### CHAIR

**Dave Reiff**

Senior Vice President  
Wal-Mart Stores, Inc.

### MEMBERS

**Steve Carter**

Director, Transportation Planning  
Target Corporation

**John Flanigan**

Executive Vice President, Global Supply  
Chain  
Dollar General Corporation

**Brian Gibson**

Professor, Supply Chain Management  
Auburn University

**Mike Graham**

Senior Vice President, Logistics  
H-E-B

**Rosa Hakala**

Vice President, Supply Chain Strategy &  
Transportation  
Best Buy Co., Inc.

**Mark Hilborn**

Vice President, Logistics  
PETCO Animal Supplies, Inc.

**Donna Howard**

Vice President & Managing Director  
Nestlé Purina Care

**Richard Keyes**

Executive Vice President, Supply Chain &  
Manufacturing  
Meijer, Inc.

**Marie Lacertosa**

Senior Vice President, Supply Chain  
Management  
J.C. Penney Company, Inc.

**Mike Mabry**

Executive Vice President, Logistics &  
Distribution  
Lowe's Companies, Inc.

**Larry Mahoney**

Senior Vice President  
Wal-Mart Stores, Inc.

**Carlos Menenez**

Vice President, Distribution & Operations  
Planning  
Canadian Tire Corporation

**Steve Szilagyi**

Senior Vice President, Distribution  
Lowe's Companies, Inc.

**Michele Willoughby**

Senior Vice President, Supply Chain  
Dick's Supporting Goods, Inc.

**Harold Wilson**

Senior Vice President, Distribution &  
Transportation Services  
Big Lots Stores, Inc.

**Matthew Lindsey**

Director, Customer Supply Chain  
Unilever

**Steve Buccella**

Director, System Sales & Marketing  
Dematic

**John Champion**

Senior Partner  
Kurt Salmon Associates

**Anthony Chiarello**

President & Chief Executive Officer  
American Shipping Group

**Jim Craig**

Senior Vice President, Sales & Marketing  
NYK Logistics (Americas)

**Patrick Kelleher**

Senior Vice President, Business  
Development  
Exel

**Karl Ryder**

Vice President, Retail Sector  
UPS

**Francis Walsh**

Executive Vice President  
National Retail Systems, Inc.

**Diane Closs**

Advisor  
RILA Logistics Steering Committee

# LOGISTICS CONFERENCE 2011



## Registration

Name		Title	
Informal Name for Badge			
Company Name			
Street Address			
City	State	Country	Zip Code
Telephone		Fax	
E-mail*			

*\*RILA sends confirmations via email. We do not publish email addresses.*

### Fees

#### Individual Registration Rates

	Before 11/20/10	11/20/10-2/18/11	After 2/18/11
RILA Member Retailers/Product Manufacturer:	<input type="checkbox"/> \$595/person	<input type="checkbox"/> \$795/person	<input type="checkbox"/> \$895/person
Non-Member Retailers/Product Manufacturer:	<input type="checkbox"/> \$895/person	<input type="checkbox"/> \$1095/person	<input type="checkbox"/> \$1195/person

#### Group Registration Rates *(Available to companies registering 5 or more executives)*

	Before 11/20/10	11/20/10-2/18/11	After 2/18/11
RILA Member Retailers/Product Manufacturer:	<input type="checkbox"/> \$495/person	<input type="checkbox"/> \$595/person	<input type="checkbox"/> \$695/person
Non-Member Retailers/Product Manufacturer:	<input type="checkbox"/> \$795/person	<input type="checkbox"/> \$895/person	<input type="checkbox"/> \$995/person

Total number of executives: \_\_\_\_\_ x rate: \$ \_\_\_\_\_ = Total \$ \_\_\_\_\_

Promo code: RLPROSPECT

#### Payment Information

Check Enclosed     AMEX     Discover/Novus     MasterCard     VISA

Make checks payable to: Retail Industry Leaders Association  
Mail payments to: P.O. Box 630545 • Baltimore, MD 21263-0545  
Fax: (703) 841-1184

Name on Card	Signature		
Card Number	Expiration Date	Billing Zip Code	CVV

#### Cancellation & Refund Policy:

If a cancellation is requested on or before December 17, 2010, RILA will process a refund in the same manner that the registration payment was made, less a processing fee of 10% per registration. If a cancellation is requested between December 17, 2010 and February 9, 2011, RILA will process a refund in the same manner that the registration payment was made, less a processing fee of 50% per registration. Cancellation requests received on or after February 9, 2011, are non-refundable. Registered attendees may transfer their registrations to another individual from the same company at any time. All cancellation and transfer requests must be sent in writing.

I have read, understand and agree to RILA's Cancellation & Refund policy. \_\_\_\_\_